



ARMONIA | NEW CAPITAL



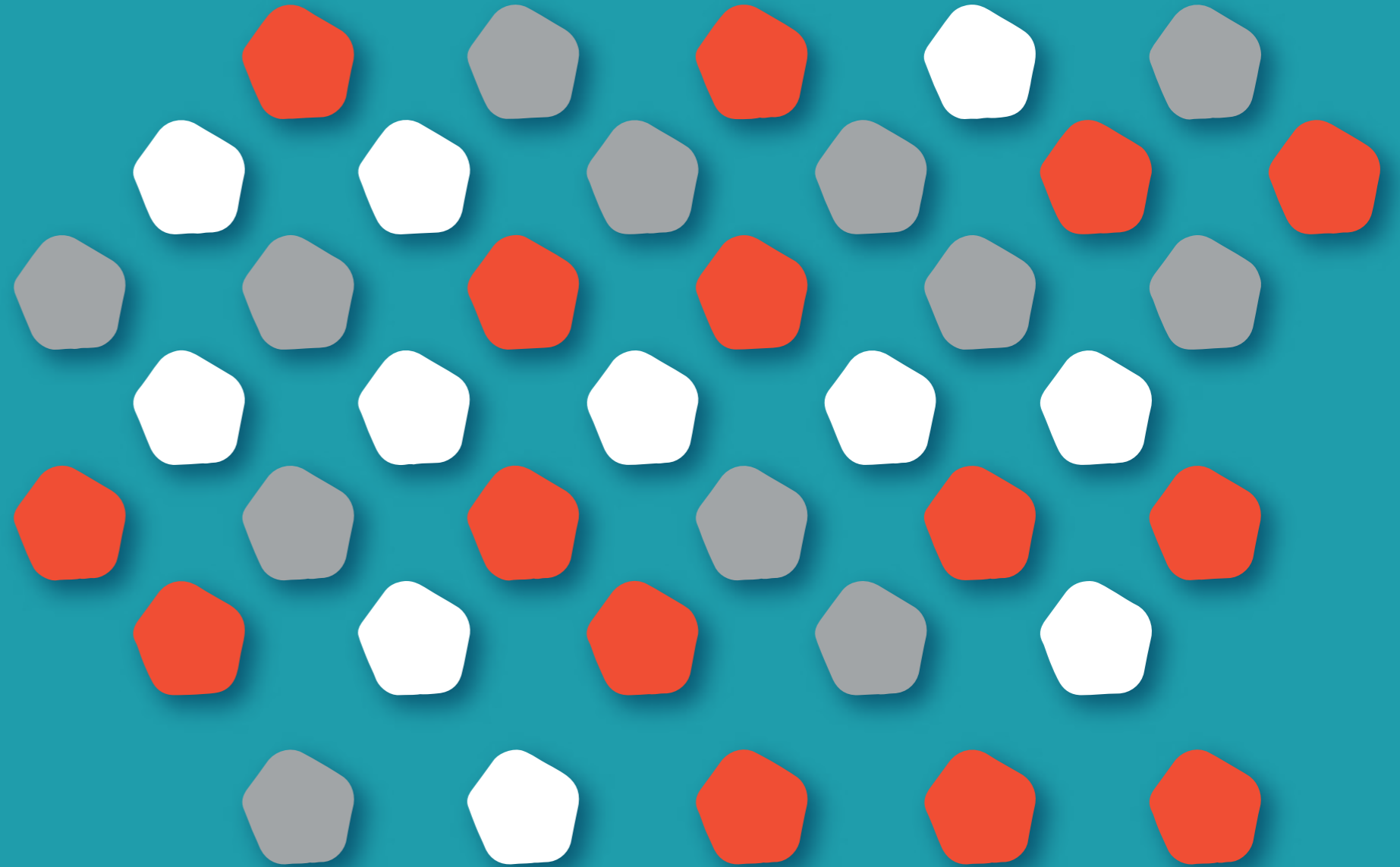
TLD
THE LAND DEVELOPERS
Building S1 - B - Third Administrative Floor,
Down Town Mall, 90 st. - Katameya, New Cairo, EGYPT

tld-eg.com

16170



ARMONIA | NEW CAPITAL





**DISCOVER
YOUR SPACE**



A WORD OF TRUST

“Our model of upscale real estate solutions allows us to expand across new fourth generation cities in Egypt, and continue to earn the trust of customers, employees, and shareholders.”

Perfection is not a word, yet a way of life. It is the essence of success, of going forward and thriving for the best. From experience stretched back to 30 years of entrepreneurship and investments in various businesses, from tourism and hotel management to retail and real estate development. A diversity that added profound weight and insights about what the customers are really looking for, and how to influence their lives with even more than what they imagine for themselves. This is the real passion of TLD-The Land Developers, the developments we offer are built with solid strings of trust and integrity, our values are the outspoken expression of each and every project delivered or to be delivered.

Chairman
Ahmed El Tayebi



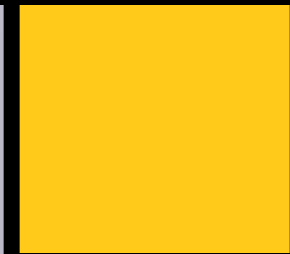
IT'S



WHO



WE ARE



IT'S WHAT WE DO



A STORY WORTH TELLING

We aim to join forces and capitalize together on the growing opportunities in the Egyptian Real Estate Market to develop communities, while offering distinctive architectural designs, combining premier quality with practicality, and accessibility in the most premium locations in the country.

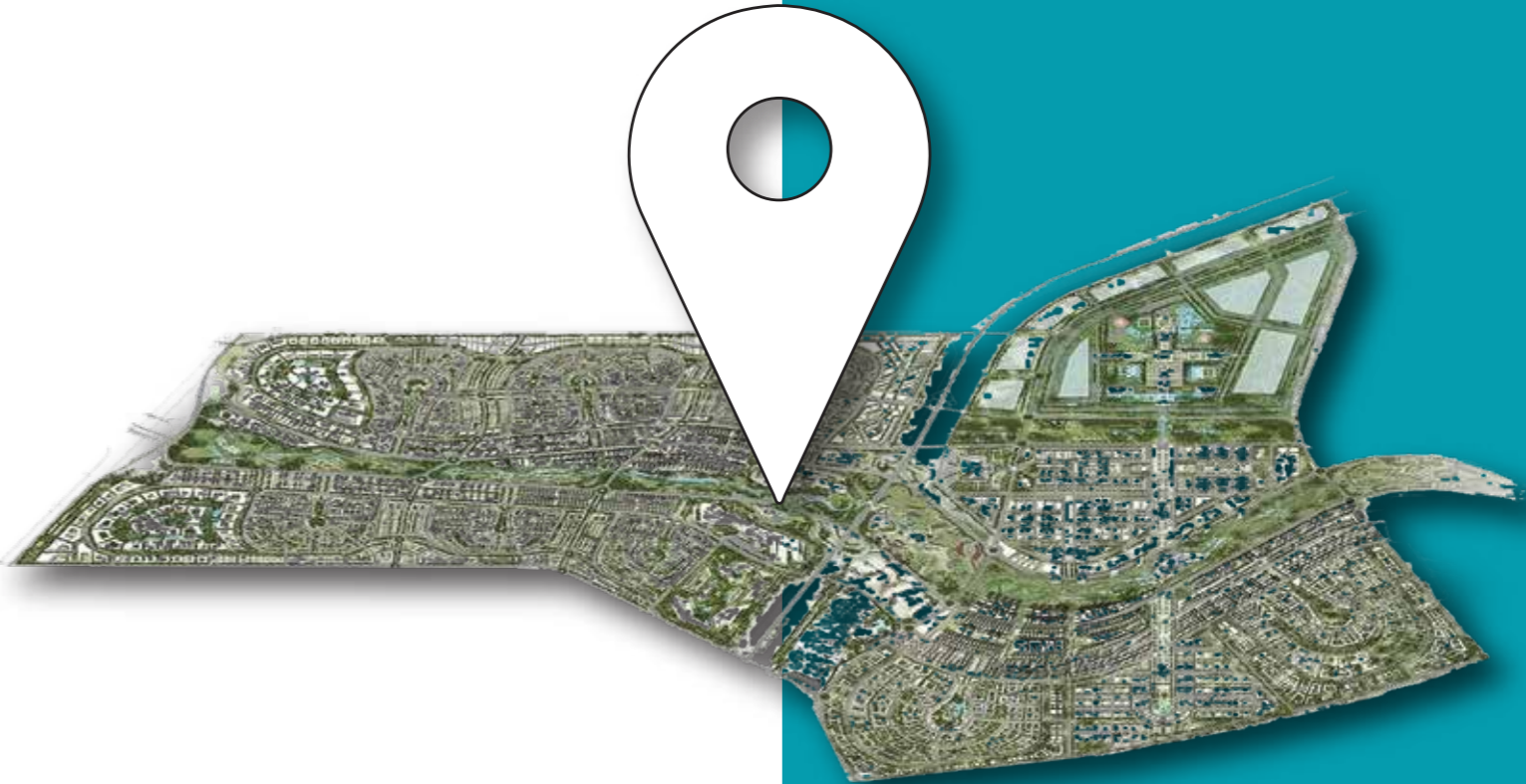
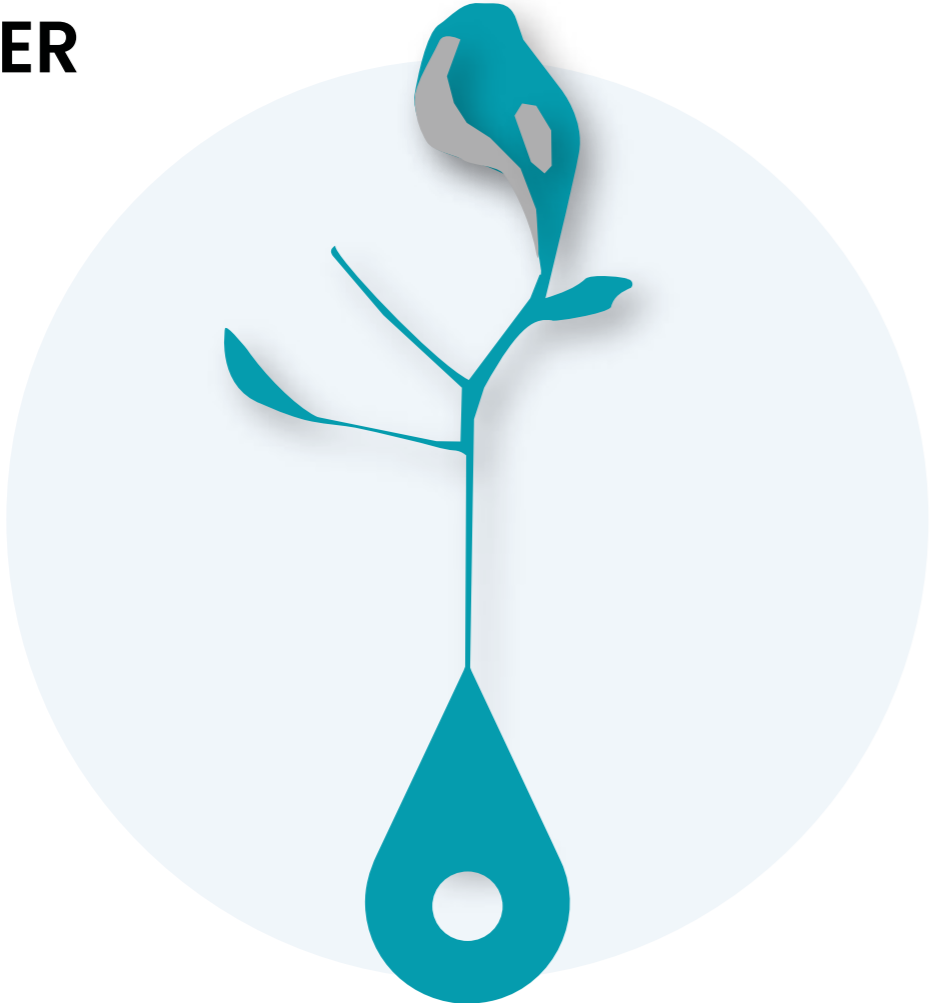
We are a Real Estate Development joint stock company founded and based in Egypt with a vision to bring a wealth of well integrated Commercial and Real Estate projects through our joint shareholders. Our three shareholders are El Tayebi Developments, A-part for import export and trade, and Quality for Steel and Concrete.

Our extensive Real Estate experience is inherited from El Tayebi Developments, a well-established name in the market since 2006, with a remarkable portfolio of completed high-end projects in the finest districts of Egypt, from Maadi, to New Cairo, West Golf, and reaching to Alexandria.

El Tayebi Developments' boutique development undertakings which was founded to cater to a niche clientele of expats with tailored foreign standards has enriched our expertise and paved the way for an added edge to differentiate us in the Egyptian market.



**A LOCATION LIKE
NO OTHER**



 **TOTAL AREA**
170,000 arces

 **RESIDENTIAL DISTRICTS**
20

 **MAJOR ROADS OF**
650KM

 **SCHOOLS & UNIVERSITIES**
2,000

 **CITY OF THE ART & CULTURE**

 **AN ELECTRIC TRAIN**

 **SOLAR ENERGY**

 **SMART INFORMATION NETWORK**

 **INTERNATIONAL AIRPORT**

 **MOSQUES & CHURCHES**
1,250

 **SPORTS CITY**

 **BANKS**
20

 **KNOWLEDGE CITY**

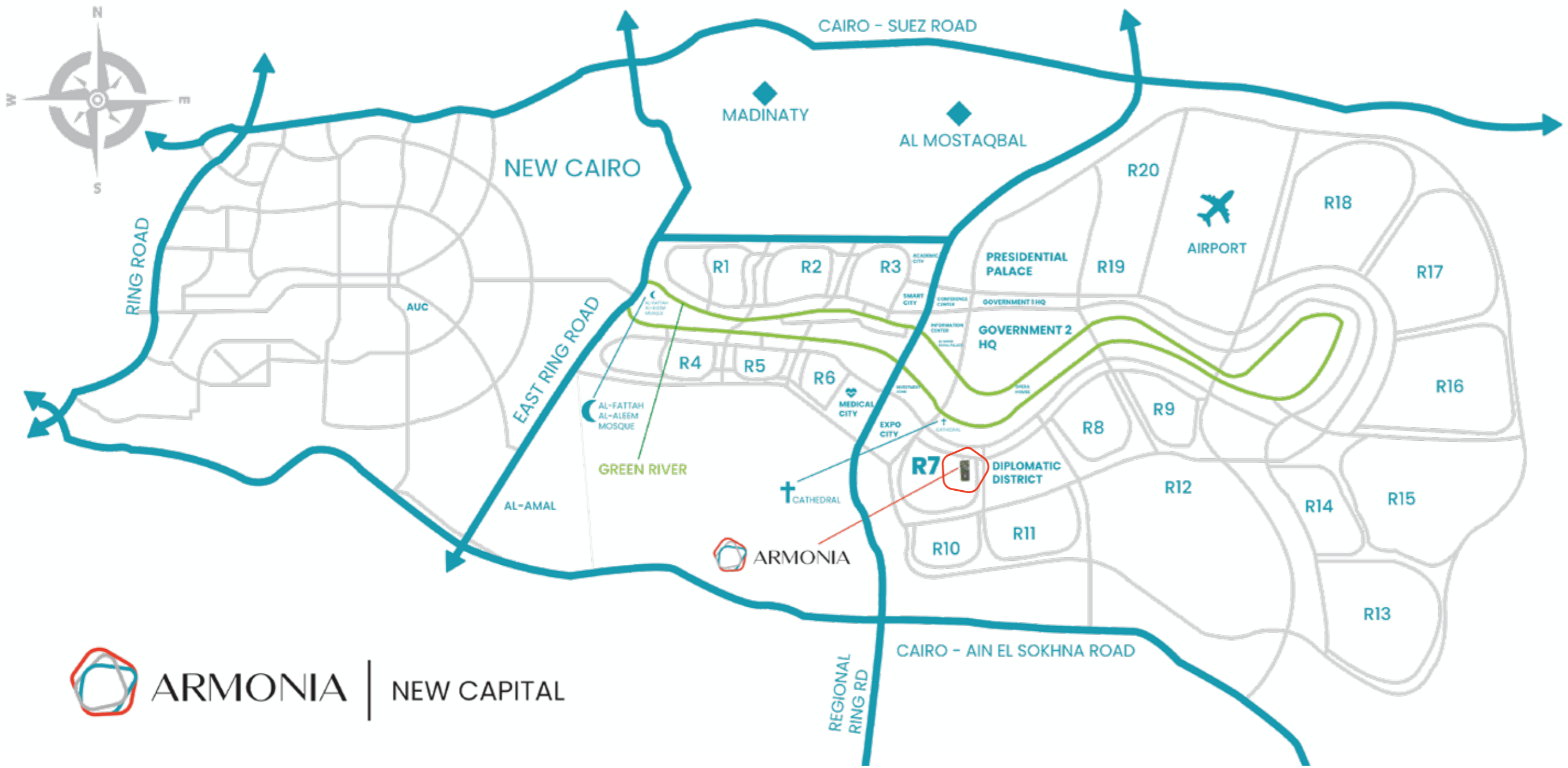
 **MEDICAL CITY**
600

 **GOVERNMENT DISTRICT**

 **SMART VILLAGE**

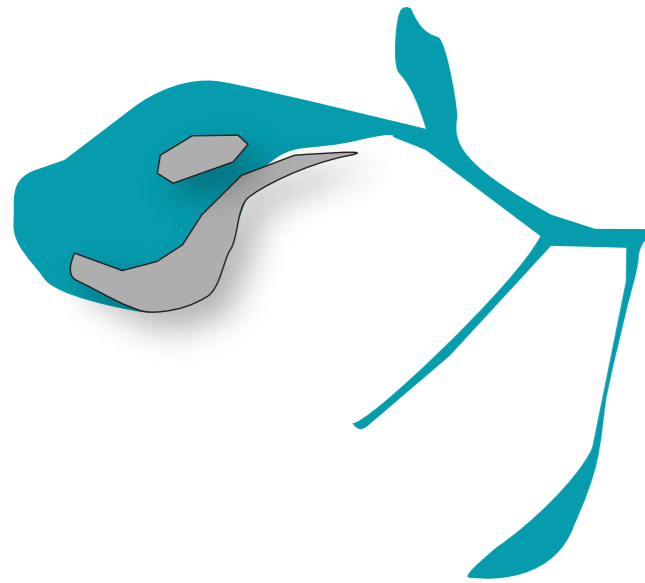
THE CENTER OF PROSPERITY





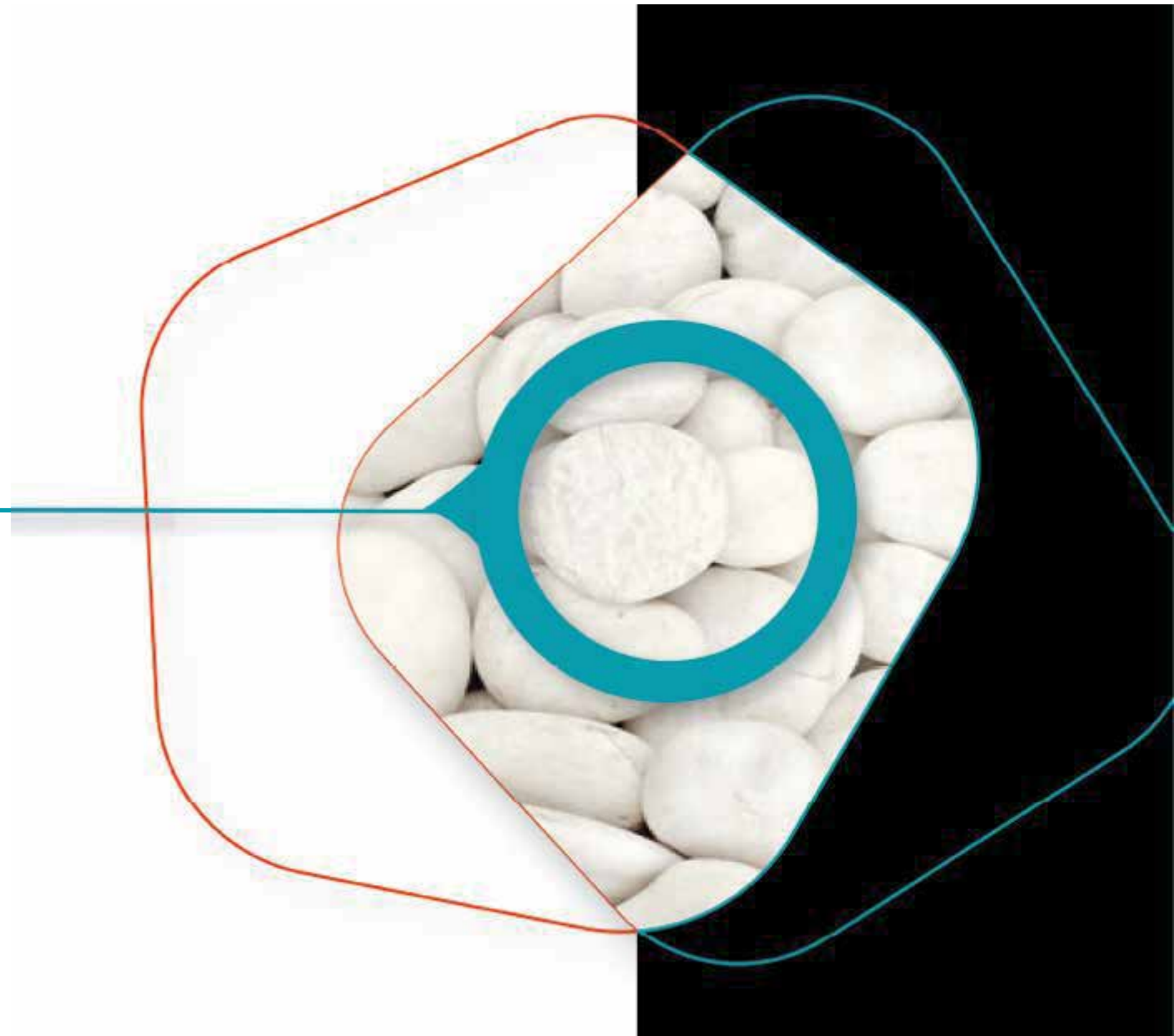
ARMONIA | NEW CAPITAL

-  **Diplomatic District**
0.8 KM
-  **Government Center**
4.1 KM
-  **Conference Center**
4.8 KM
-  **Medical City**
5.3 KM
-  **Investment Zone**
5.5 KM
-  **Opera**
1.6 KM
-  **Academic City**
8.8 KM
-  **New Capital Cathedral**
2.5 KM
-  **New Capital Al Fattah Al Alim Mosque**
14 KM
-  **Airport**
10 KM



MASTER PLAN

Spread over 42 acres, Armonia has only 20% built-up area and the remaining 80% is dedicated to the park. Armonia offers a wide variety of living spaces ranging from 1-bedroom apartment to 4-bedroom known as Celio Villas. Living spaces range from 71 sqm to 347 sqm to serve all customers needs.

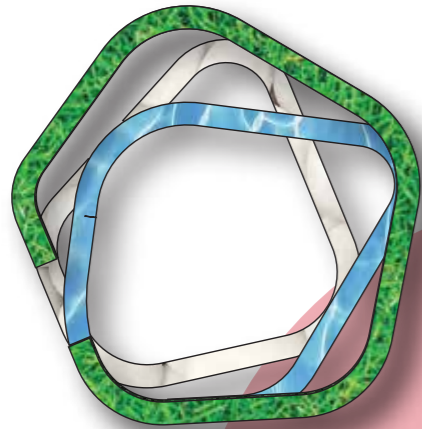






THE PHILOSOPHY

Specifically designed for those who cherish harmony and serenity, those who long to leave the bustling city life, and settle somewhere where nature and modernity come hand in hand. We give you Armonia, TLD-The Land Developers' latest project in the New Capital, inspiring harmony with nature. Get to live the life you always dreamed of having, surrounded by greenery all around, living in your very own park.



Discover your space nestled in the midst of lush landscapes, coupled with blue waters all around, as we introduce to you the first stand alone buildings in the New Capital, overlooking endless greenery and abundant crystal waters of our eleven compound swimming pools, creating the perfect harmonious balance for your eyes. Armonia, is where your peace of mind comes first, as we built every inch of our compound to better suit your needs, offering you luxurious apartments in our standalone buildings where privacy is paramount as every building is placed in a separate axis to provide peace and quietness.



THE CLUBHOUSE

Our clubhouse is the perfect place for your daily escapades, and times of relaxation that you long for. We got you a luxurious state of the art spa to offer relaxing treatments to complement the care-free life we aspire to offer you at Armonia. As we promise to make life easier for you, we have even gathered everything that you look for and more in our clubhouse, as we have a pharmacy and supermarket, to have everything you might need within easy reach.

Whether you want to catch up with some friends and socialize over a cup of coffee, or simply crave some quality relaxation, our clubhouse has it all! This is your own private hub for socialization, to host your daily gatherings with family and friends. Grab a delicious lunch or have coffee with friends in our pool café's deck, or even go for a refreshing swim and hit the gym, while you leave the kids at our day care center, or our fun-filled game room.





A PLACE FOR ALL

THE ART OF LIVING

Armonia features unmatched Amenities categorized according to the different age brackets of Armonia residents, you experience the true harmony strolling around the park and passing by the activities engineered within. A walk in the park will revive your spirit giving Armonia the ultimate experience.



Pedestrine Lane
to Armoia Walk

SWIMMING POOL
BBQ AREA
EVENTS AREA
KIDS AREA

SWIMMING POOL

BBQ AREA
SWIMMING POOL

SWIMMING POOL

KIDS AREA
JOGGING TRACK

SWIMMING POOL

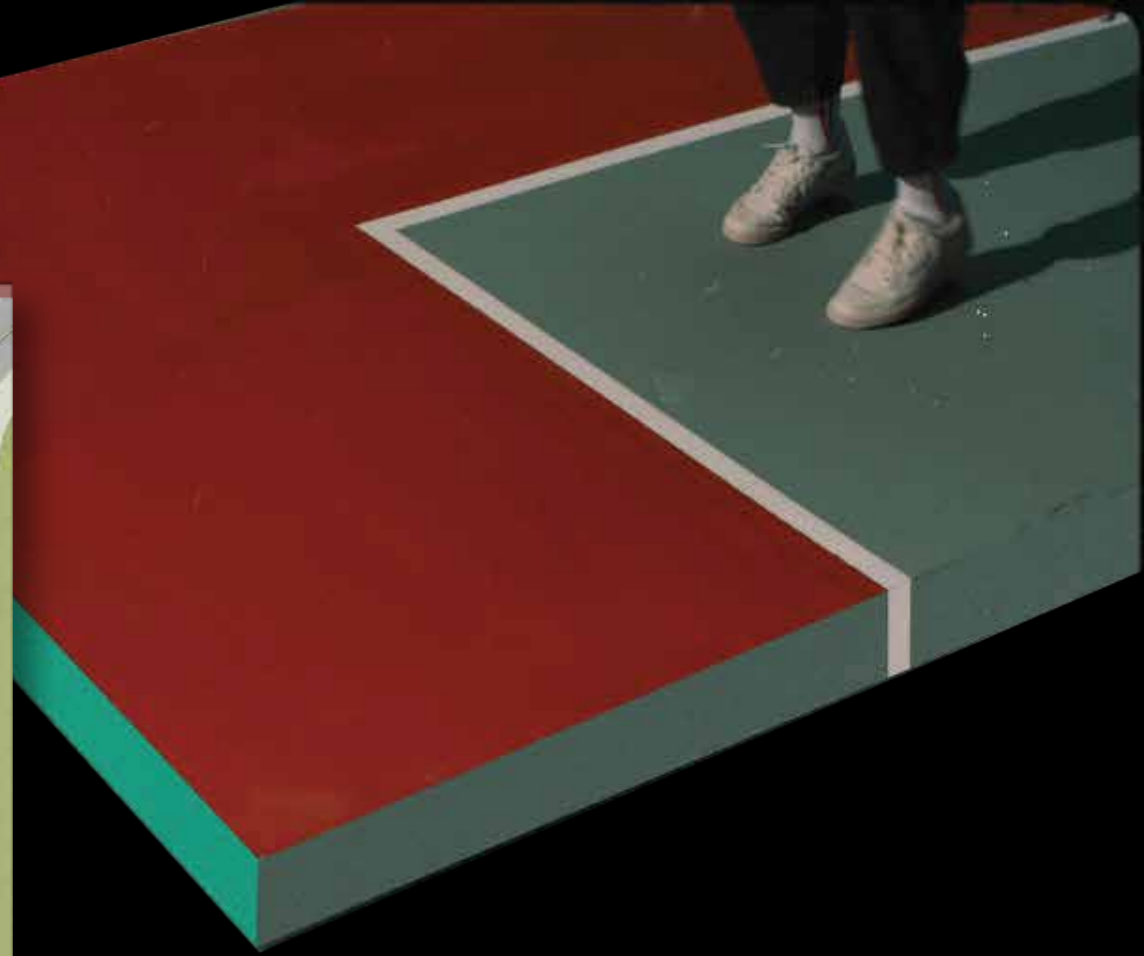


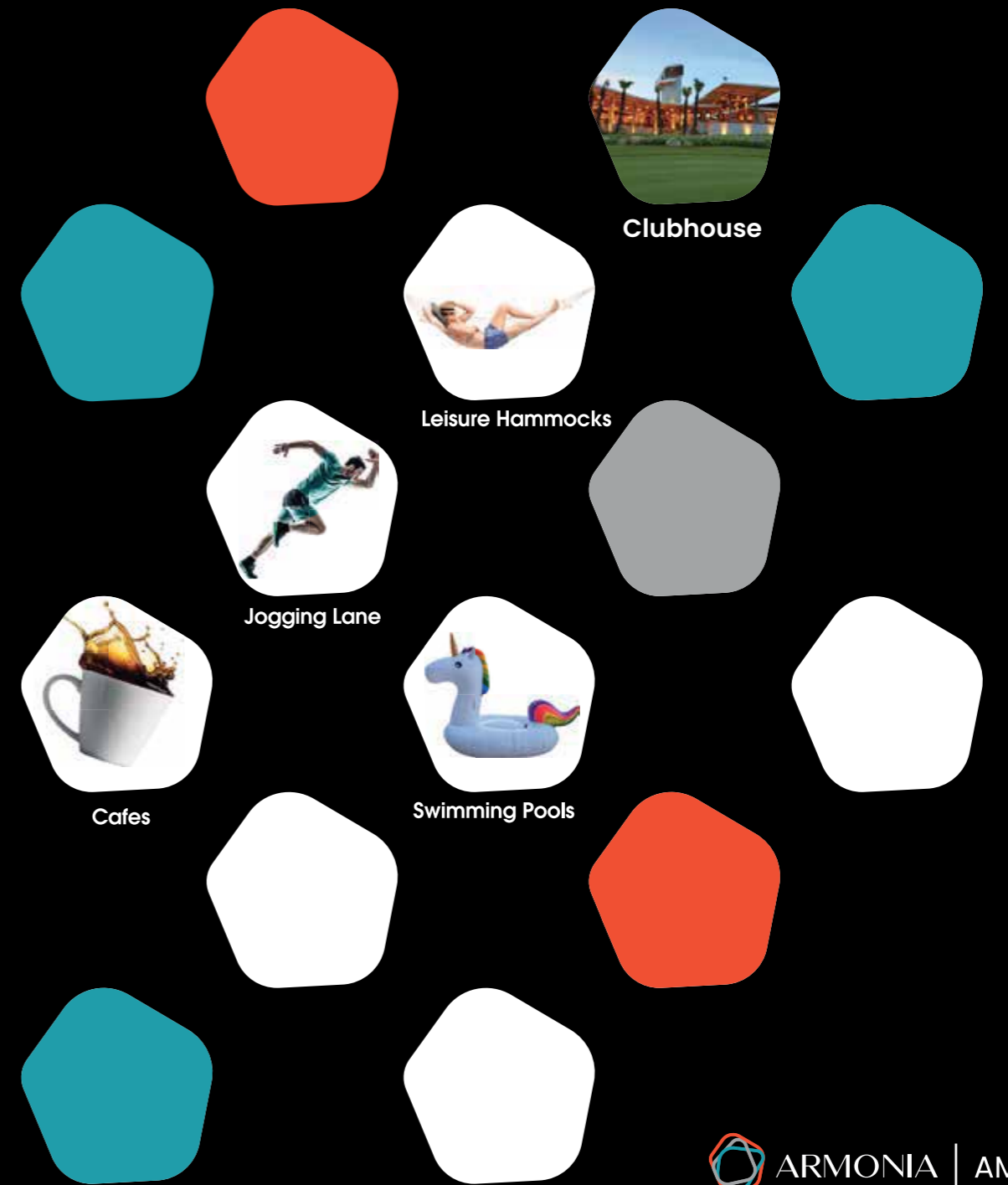
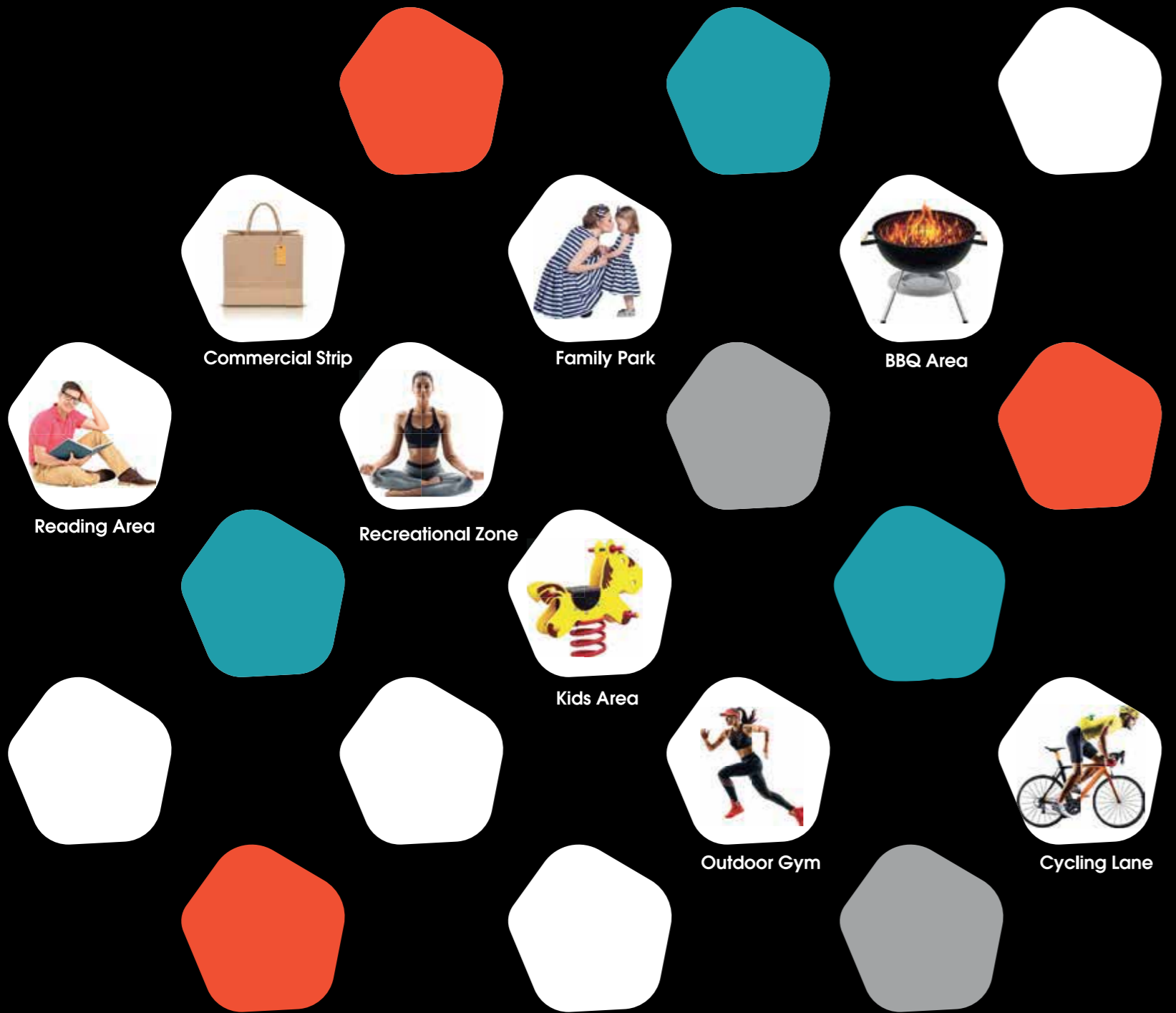
SWIMMING POOL

OUTDOOR GYM
SWIMMING POOL
JOGGING TRACK

SWIMMING POOL

CLUB HOUSE
SWIMMING POOL





ANSWERING ALL YOUR NEEDS

Our amenities range from a commercial strip where you can find all your needs, upscale cafes and restaurant deck, a BBQ area for the whole neighborhood to enjoy the outdoors, a sunny family park to take your furry friends for a walk. We have got you covered if you're looking for some action, as we got you a recreational zone, outdoors gym, jogging and cycling lanes to go running or take your bike for a spin, or take a dip in one of our eleven swimming pools. And if you're looking to soak up some sun rays, while enjoying a much needed calm time away from the kids, we've got you covered as well with a special kids' area to leave your little ones to play, while you enjoy some serene time in our reading area, or simply enjoy the calmness as you visit our leisure hammocks.



FRIENDLY ENVIRONMENT





**INVITING
GREENERY**

THE PROTOTYPES



3 Bedrooms Garden Apartment

From 278 m2 To 303 m2



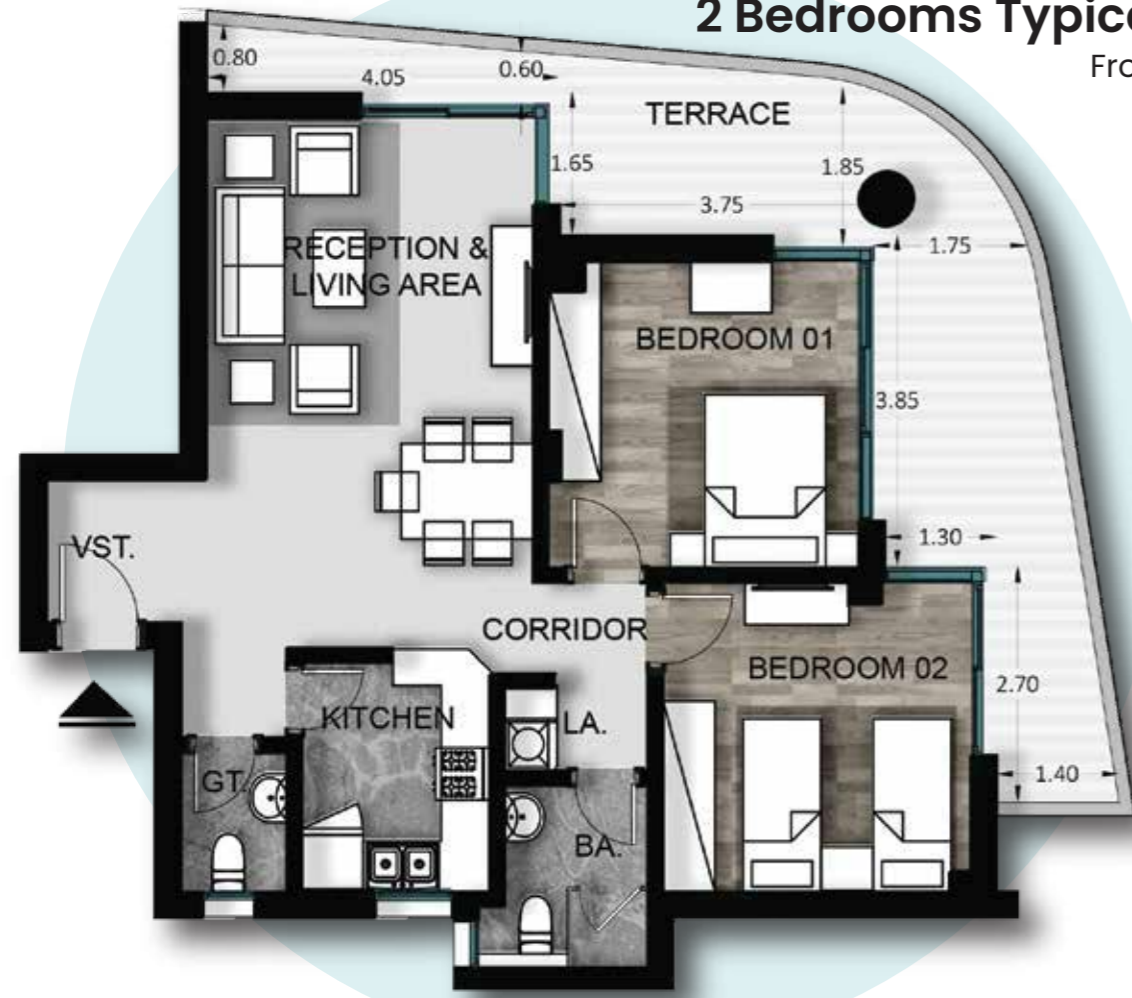
1 Bedroom Typical Apartment

From 71 m2 To 75 m2



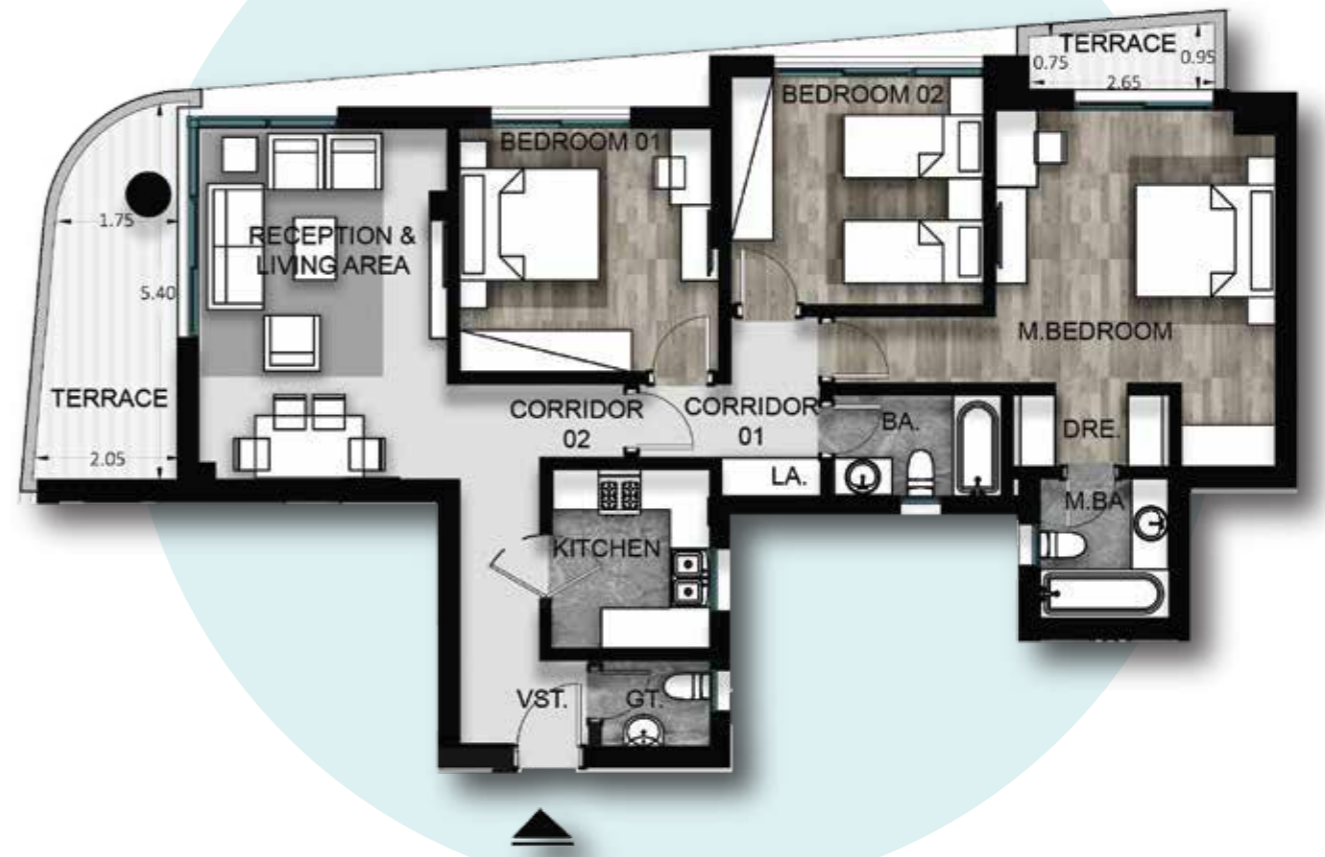
2 Bedrooms Typical Apartment

From 107 m2 To 130 m2



3 Bedrooms Typical Apartment (Type A)

From 139 m2 To 172 m2



3 Bedrooms Typical Apartment (Type B)

From 171 m2 To 200 m2



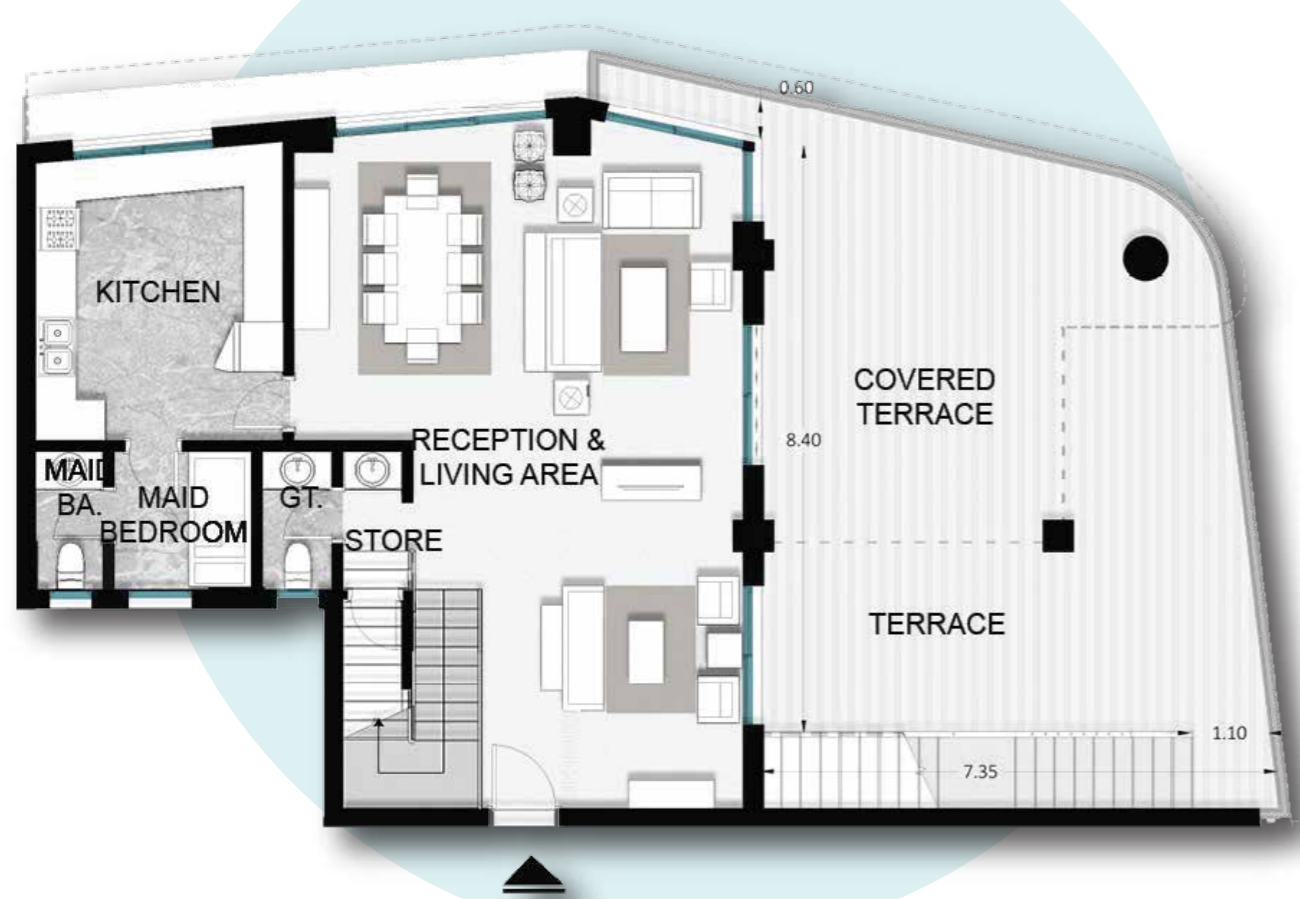
4 Bedrooms Typical Apartment

From 191 m2



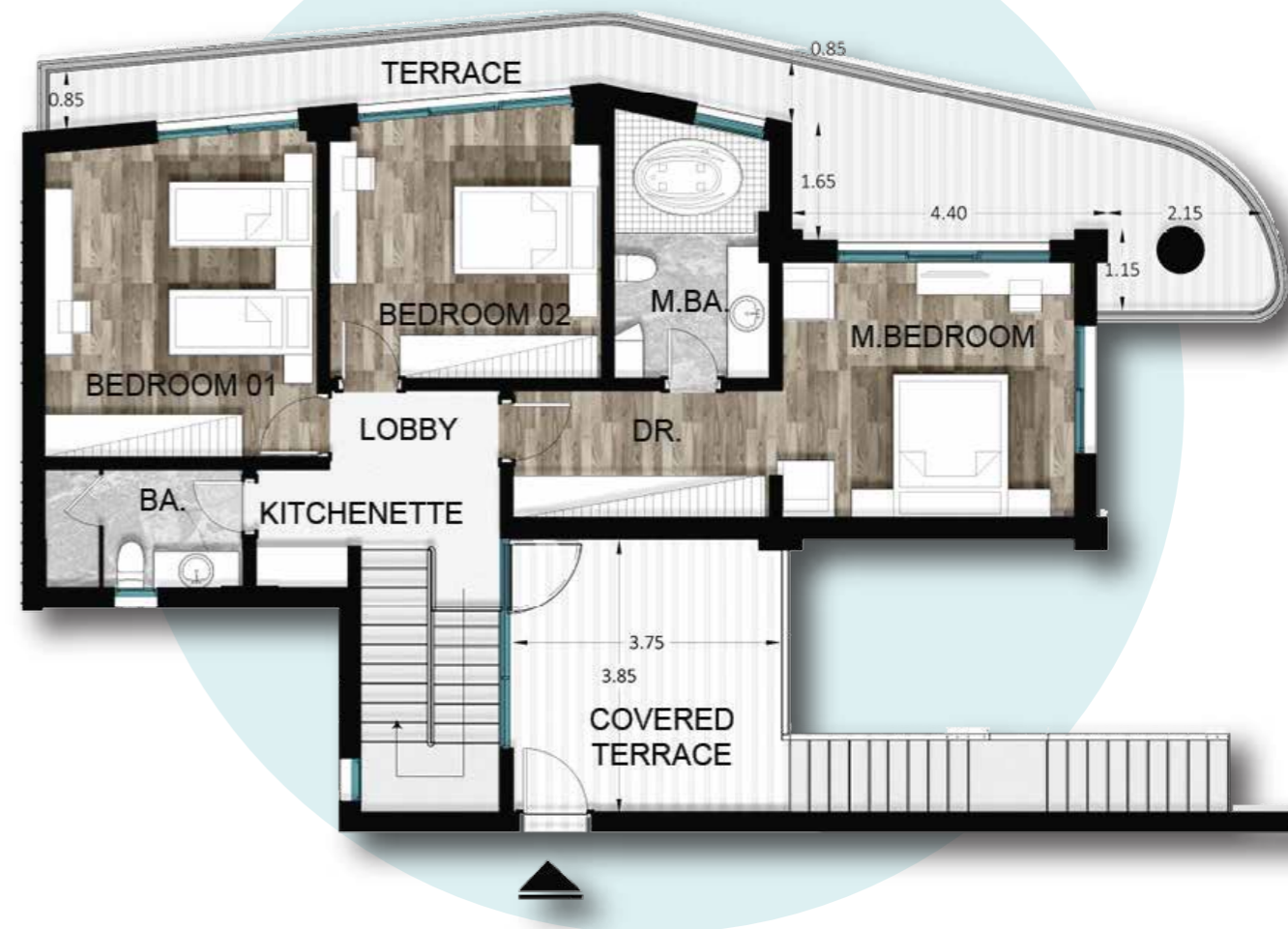
Cielo Villa 6TH floor

From 330 m2 to 343 m2



Cielo Villa 7TH Floor

From 330 m2 to 343 m2



DISCLAIMERS

1. The master plan is an artist impression, Actual product may vary.
2. All materials and drawings are approximate, information is subject to change without notice.
3. Activity masterplan is for illustration purpose only, Activities locations and type may change without prior notice.
4. The Developer reserves the right to make revisions and changes accordingly.